

FLEXIBLE LED LUMISTRAP™ LED SIMULATED NEON



High Intensity Flexible LED Accent Lighting

FEATURES

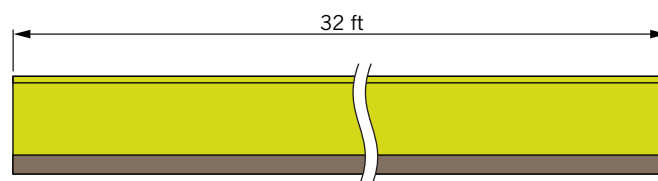
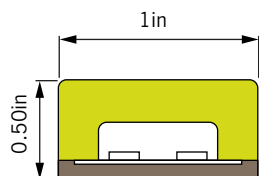
- Bend-able, border lighting
- Enhanced SMD LED
- Dual-extrusion, diffused silicone lens and thermal conductive base
- Long Life - 50,000 hrs
- UV and discoloration resistant
- UL 94 V-0
- IP67
- Easy installation and reconnect accessories
- Flexible and cut-able*
- Min. bending diameter 4.7in

3-YEAR WARRANTY

DETAILS

Input.....	100-240 VAC
Output	24 VDC
Max. Load Footage	32 ft.
Watts per Foot	7.60
Dimming Capable	Yes
Bending Parameters.....	4.70in.
Limited Warranty Terms	3 Years
Materials.....	Silicone
Dimensions.....	0.50 x 1.00
Certification	cURus

DIMENSIONS



Notes:
1. Unit: in/ft

*NOTE: 32.8ft is the maximum footage for single power supply

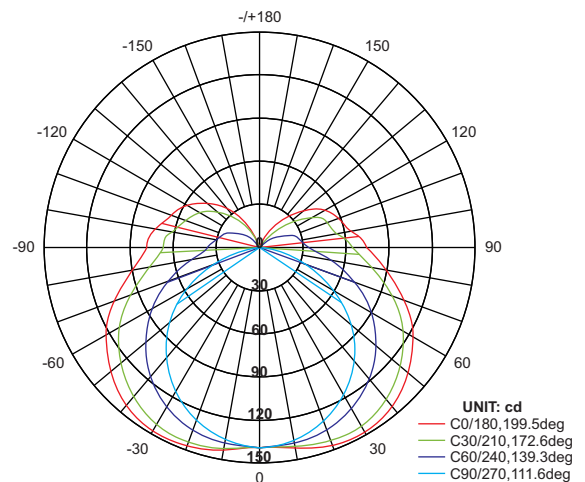
APPLICATIONS

- Lighting engine for special linear luminaries
- Shelf lighting, freezer and cooler lighting
- Building and sign border lighting
- Cove and under counter lighting
- Exterior accent/border lighting

SPECIFICATIONS

Part No./Color	Footage	Wattage per foot	Lumens per foot	Number of LEDs/ft.
600-1029 White 6500K	32	7.60	610	72
600-1045 White 5000K	32	7.60	610	72
600-1044 White 4000K	32	7.60	550	72
600-1022 White 3000K	32	7.60	550	72
600-1042 White 2700K	32	7.60	520	72
600-1017 Red	32	7.60	-	72
600-1018 Blue	32	7.60	-	72
600-1019 Green	32	7.60	-	72

*LumiStrap systems based on Mean Well 240W, 24 VDC, LED Driver HLG-240H-24A



AVERAGE BEAM ANGLE (50%):155.8 DEG



918.622.4978

www.lektroninc.com
sales@lektroninc.com

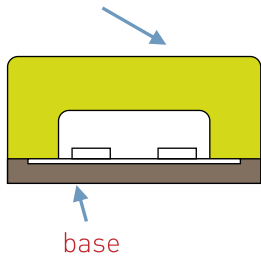
FLEXIBLE LED LUMISTRAP™ LED SIMULATED NEON



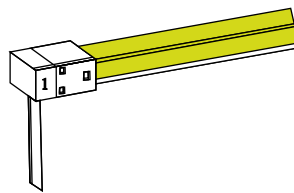
CONNECTORS

Soldering free power feed and endcaps

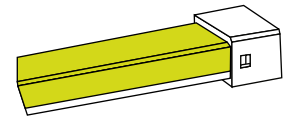
Lighting body



IP67 Plug
Cable from bottom

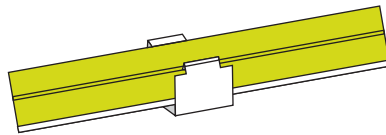
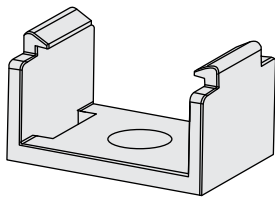


IP67 Endcap

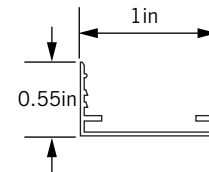


INSTALLATION ACCESSORIES

Type 1,
Transparent clips for indoor application

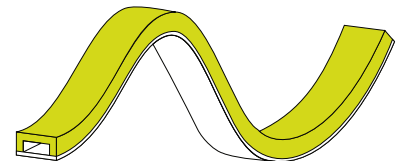


Type 2,
AL profile for outdoor application (3.3ft per pcs,
can be cut to certain length needed)



ATTENTION

- Max. Length of LED neon is 32.8ft from power supplier to single end.
- Please ensure that the power supply is UL recognized and rated to operate the total load.
Only qualified personnel should be allowed to perform installations.
- If surge protection structure not within power supply, additional protection will be necessary.
- Before cutting and making reconnection, please read the installation manual, and please ensure you have read and fully understand it.
- Please do not twist the product and do not bend it in wrong direction, the only bending direction is as follows:**



*NOTES:

1. Cutting unit of White/Blue/Green version is 4in, Cutting unit of Red and Yellow version is 3.28in.

**NOTES:

1&2, White/Blue/Green version the current is 305 MA/ft and power is 7.3 W/ft, Red and Yellow version the current is 220 MA/ft and the power is 5.3 W/ft.



918.622.4978

www.lektroninc.com
sales@lektroninc.com